

# 10 ways your organization can benefit from the Kanban Maturity Model

The Kanban Maturity Model is a powerful tool based on more than 10 years of observations and experience from around the world and across a broad spectrum of industries. Take a look at some of the benefits the KMM can bring to your organization:

## 01 *Avoid poor decision making*

The KMM helps managers and teams understand the system they manage and avoid making poor decisions that lead to negative effects on projects, services, workers, customers, and the business.

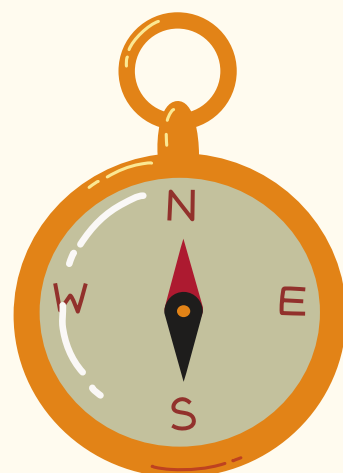


## 02 *Effective improvement*

The KMM describes the characteristics of an organizational culture that facilitates understanding real-world situations and defining an appropriate approach to improving them effectively.

## 03 *Pragmatic guidance*

The KMM describes a set of practices for use at enterprise scale, however, it avoids focusing on compliance to a framework. The KMM does not define processes or a methodology.



## 04 *Risk management*

The KMM guides organizations toward fit-for-purpose products and services with appropriate exposure to risk and reasonable economic returns.

## 05 *A clear plan for improvement*

The KMM allows objective assessment of the current state of an organization to see where challenges and opportunities lie on the path to greater business and organizational agility.





# 06

## *Avoid implementation failure*

The KMM provides guidelines on the improvement actions to take, creating just enough stress to catalyze improvement without overreaching and risking failure of adoption.

---

# 07

## *Evaluate your agility*

The KMM helps benchmark organizational agility and fitness-for-purpose with its different levels.

---



# 08

## *Improve market positioning*

The KMM improves positioning in the market by appropriately developing capabilities to satisfy and exceed customer expectations.

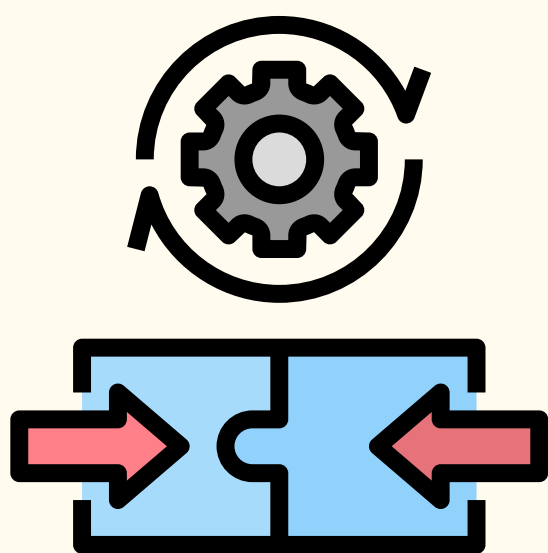
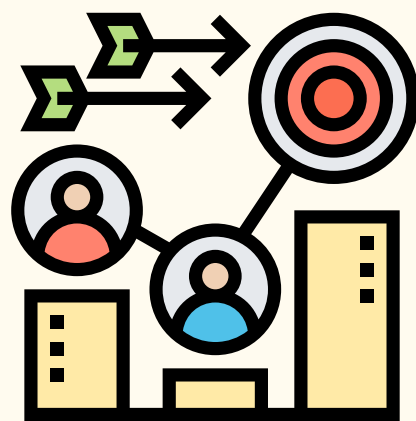
---

# 09

## *Create a common purpose*

The KMM aligns stakeholders and team members around a common understanding of the purpose of an improvement initiative and how to approach it.

---



# 10

## *Integrate with other models*

The KMM complements other models and methods, such as CMMI and PMBoK,4 with a systems-thinking approach that incorporates an understanding of the psychology and sociology of the workforce.

---

*More information:*

**djaa.com**  
**kmm.plus**  
**mauvisoft.com**